

**Breathe better 24 hours a day, 7 days a week:** Improve your lung health and reduce coughing and mucus by wearing an HME day and night.

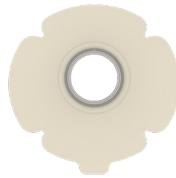


Start your **daytime routine** by choosing the right products for your activities today.

## CHOOSE YOUR DAYTIME ATTACHMENT



Provox<sup>®</sup> Life<sup>™</sup> LaryTube<sup>™</sup>



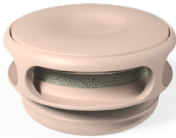
Provox<sup>®</sup> Life<sup>™</sup> Adhesive



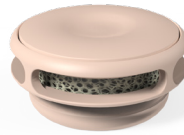
Provox<sup>®</sup> Life<sup>™</sup> LaryButton<sup>™</sup>

There are several Provox Life adhesive options available. All of them are compatible with all Provox Life HMEs.

## CHOOSE YOUR DAYTIME HME



Provox<sup>®</sup> Life<sup>™</sup> Home HME



Provox<sup>®</sup> Life<sup>™</sup> Go HME

When you are ready, there are more Provox Life HME options available for different situations. Consult your clinician about what products are right for you.

**All Provox Life HMEs can be used with all Provox Life attachments.**

**Breathe better 24 hours a day, 7 days a week:** Improve your lung health and reduce coughing and mucus by wearing an HME day and night.

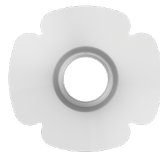


Start your **nighttime routine** by choosing the right products for your nighttime comfort.

## CHOOSE YOUR NIGHTTIME ATTACHMENT



Provox<sup>®</sup> Life<sup>™</sup> LaryTube<sup>™</sup>



Provox<sup>®</sup> Life<sup>™</sup> Adhesive



Provox<sup>®</sup> Life<sup>™</sup> LaryButton<sup>™</sup>

Your nighttime attachment choice may be the same as your daytime choice. All Provox attachments are compatible with Provox Life Night HME.

## CHOOSE YOUR NIGHTTIME HME



Provox<sup>®</sup> Life<sup>™</sup> Night HME

You can use Provox Life Night HME with any Provox Life attachments (LaryTube LaryButton and ALL Provox Life Adhesives).

**All Provox Life HMEs can be used with all Provox Life attachments.**